

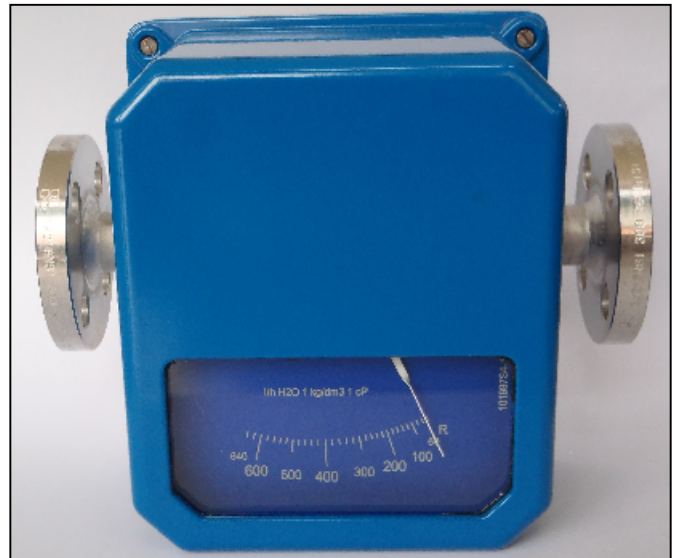
## TMO 250 SERIES METALLIC FLOWMETERS

### TECHNICAL FEATURES

- Measuring tube in AISI 316
- Float and wetted parts in AISI 316
- Magnetic of reading transmission
- Alluminium housing IP 66; dim. 170x195 mm
- Horizontal Mounting
- Measuring range 1 -10 - scale 100 mm
- Accuracy: 2,5 % v.f.s.
- Connactions: flanged ANSI - UNI  
threaded DIN 11851 (food industry)  
threaded GAS-F/NPT-F  
TRI-CLAMP

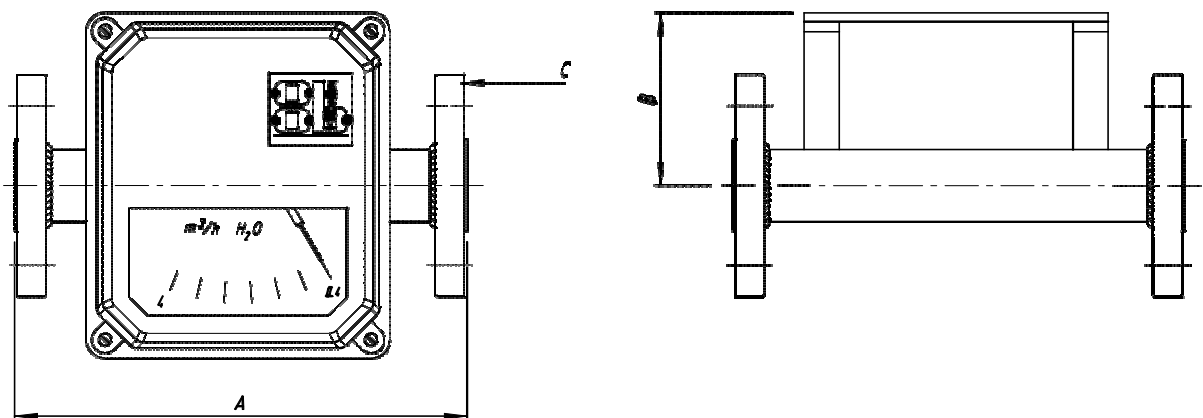
### OPERATING CONDICTIONS

- Max. Pressure 40 bar
- Max Temperature 180°C



### OPTIONS - ACCESSORIES

- Version for high pressure and temperature
- Electronic trasmitter 4÷20 mA
- Intrinsically safety transmitter Exia IIC T6, 4÷20 mA
- Min and/or max contact SPDT, type reed (30 VAC/DC 0,1 A max)
- Min and/or max contact SPDT, of inductive bistable type
- Elettrical Connection PG11
- Housing in AISI 316 and/or die-casting alluminium Exd.



### DIMENSIONS SCHEDULE

BODY DN	B (mm)	FLANGED		
		A (mm)	C	
			ANSI	UNI
1/2	125	250	1/2	15
1	130	250	1	25
2	150	250	2	50



## FLOW RANGE H2O SCHEDULE

BODY DN	CODE	FLOW RANGE H2O ns= 1 cP= 1 (l/h)
1/2"	A01	10 - 100
1/2"	A02	16 - 160
1/2"	A03	25 - 250
1/2"	A04	40 - 400
1/2"	A05	63 - 630
1/2"	A06	100 - 1000
1"	A07	160 - 1600
1"	A08	250 - 2500
1"	A09	400 - 4000
2"	A10	450 - 4500
2"	A11	750 - 7500
2"	A12	1100 - 11000
2"	A13	1600 - 16000

**N.B. Special versions for gases are available on request.**

### HOW TO ORDER:

Example: TMO250 - A - 15 – A01 - TO - XX

TMO250 model

A connections ANSI  
U connections UNI  
D DIN connections for food industry  
T Tri-Clamp connections  
G threaded GAS-F  
N threaded NPT-F

15 dn 15 o 1/2"  
25 dn 25 o 1"  
50 dn 50 o 2"

A01 flow range 10 – 100 l/h H2O

TO whitout trasmitter and contacts  
T1 standard trasmitter 4-20 mA  
T2 trasmitter Eexi  
T3 trasmitter HART®  
T4 trasmitter HART® EExia  
C1 n°1 contact reed Type  
C2 n°2 contacts reed Type  
C3 n°1 inductive bistable contact  
C4 n°2 inductive bistable contacts

XX speciality to be described separately (ex. Inox housing)

In case of fluid different of water or air please, specify the type of fluid precising:  
Specific gravity, viscosity, temperature, pressure at operating condicions.



**OFFICINE OROBICHE** srl

24010 Ponteranica (Bergamo) ITALY - via Serena, 10 - Tel. 0039.035.4530.211