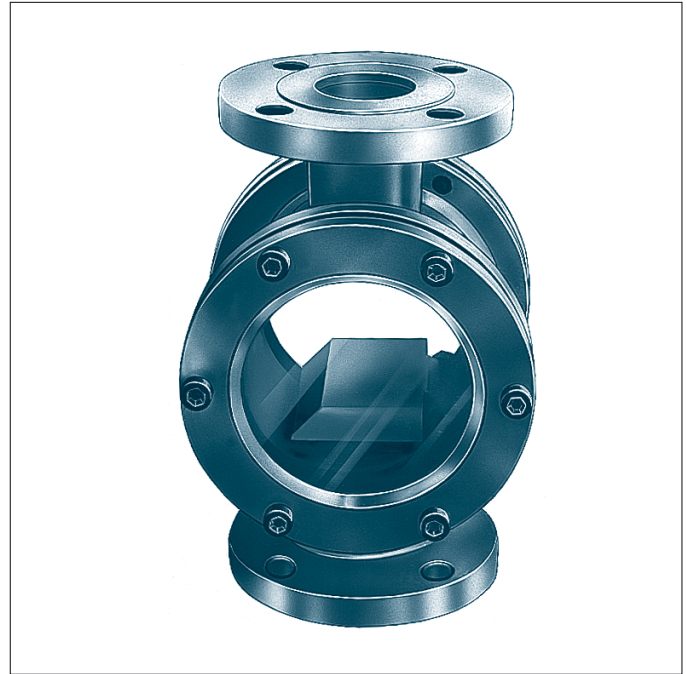


VISUAL FLOW INDICATORS - IVF SERIES

SPA - SPD MODELS

Visual flow indicator with moveable paddle for vertical mounting. For pressure up max. 10 Bar and temperature up to max. 130°C. On request, versions for higher pressures and temperatures can be made.

Flow indicators are devices for the visual confirmation that a fluid is flowing through the pipelines.



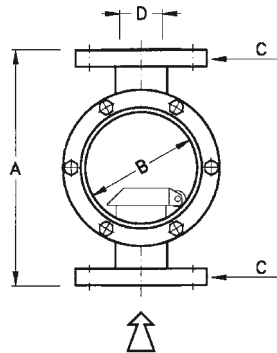
IVF/SPA MODEL:

Paddle type visual flow indicator for vertically rising fluid. Its special characteristics means that it cannot be used as a flow meter.

Made in metal and plastic materials (see table "TOLERANCE LIMITS OF THE PLASTIC TYPE VISUAL FLOW INDICATORS")

FLANGED

Standard "C" flange UNI PN 10-ANSI 150 RF. On request, other types of flanges can be made.

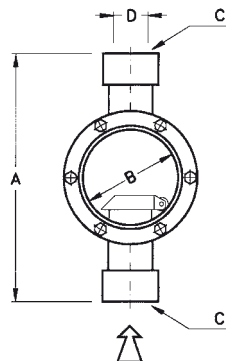


MOD.	A mm	B mm	D		WEIGHT ⁽¹⁾ in ~ kg
			UNI	ANSI	
SPA 15	170	47	15	1/2"	3
SPA 20	180	60	20	3/4"	3,8
SPA 25	180	60	25	1"	4,5
SPA 32	230	75	32	1 1/4"	6
SPA 40	260	90	40	1 1/2"	8,5
SPA 50	280	120	50	2"	18
SPA 65	300	120	65	2 1/2"	23
SPA 80	330	145	80	3"	33

1) Refers to metallic type

THREADED

Standard "C" threaded connections GAS/NPT-F and socket welding.

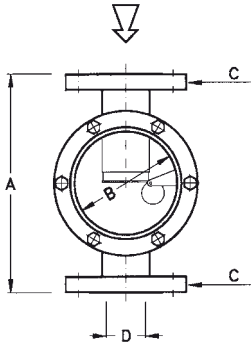


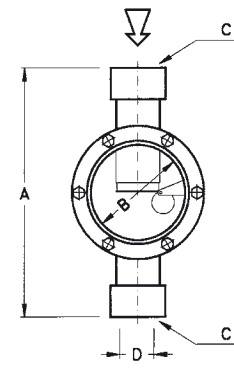
MOD.	A mm	B mm	D	WEIGHT ⁽¹⁾ in ~ kg
SPA 15	200	48	1/2"	1,5
SPA 20	210	60	3/4"	2
SPA 25	220	60	1"	2,5
SPA 32	280	75	1 1/4"	4
SPA 40	320	95	1 1/2"	6
SPA 50	340	120	2"	13
SPA 65	370	120	2 1/2"	16
SPA 80	400	135	3"	25

1) Refers to metallic type

IVF/SPD MODEL:

Paddle type visual flow indicator for vertically descending fluid. Its special characteristics means that also this instrument cannot be used as a flow meter. This model is not made in plastic materials.

FLANGED Standard "C" flange UNI PN 10- ANSI 150 RF. On request, other types of flanges can be made.		MOD.	A mm	B mm	D		WEIGHT in ~ kg
					UNI	ANSI	
		SPD 15	170	60	15	1/2"	3
		SPD 20	180	75	20	3/4"	3,8
		SPD 25	180	75	25	1"	4,5
		SPD 32	230	90	32	1 1/4"	5,5
		SPD 40	260	90	40	1 1/2"	7,5
		SPD 50	280	120	50	2"	16
		SPD 65	300	120	65	2 1/2"	21
		SPD 80	380	170	80	3"	30

THREADED Standard "C" threaded connections GAS/NPT-F and socket welding.		MOD.	A mm	B mm	D	WEIGHT in ~ kg
		SPD 20	210	75	3/4"	2
		SPD 25	220	75	1"	2,5
		SPD 32	280	90	1 1/4"	3,5
		SPD 40	320	90	1 1/2"	5
		SPD 50	340	120	2"	11
		SPD 65	370	120	2 1/2"	13
		SPD 80	450	170	3"	22

MATERIALS

CODE FOR:	Materials	Carbon steel	Inox 304	Inox 316	PVC	Moplen
	Body	A (1)	I (1) optional	J (1)	P (2)	M (2)
	Paddle	-	-	2	5	6
(1) Internal gaskets Asbestos free (A) Neoprene (N) Teflon (T) Viton (V) - (2) Internal gaskets Neoprene (N) Viton (V)						
The flanges of the glasses and the screws can be supplied in galvanized steel or stainless steel.						

TOLERANCE LIMITS OF THE PLASTIC TYPE VISUAL INDICATORS

MATERIALS	PVC	from 0° C to + 60° C pressure 6 bar at 25° C; 4 bar at 35° C; 1 bar at 60° C
		MOPLEN

HOW TO ORDER

Example: IVF/SPA 50 - A - 2 - N

IVF/SPA IVF series, SPA model
 50 diameter of connections
 A body in carbon steel
 2 paddle in S/steel AISI 316
 N Neoprene gaskets

The following data is also required: type of fluid, operating temperature and pressure.