

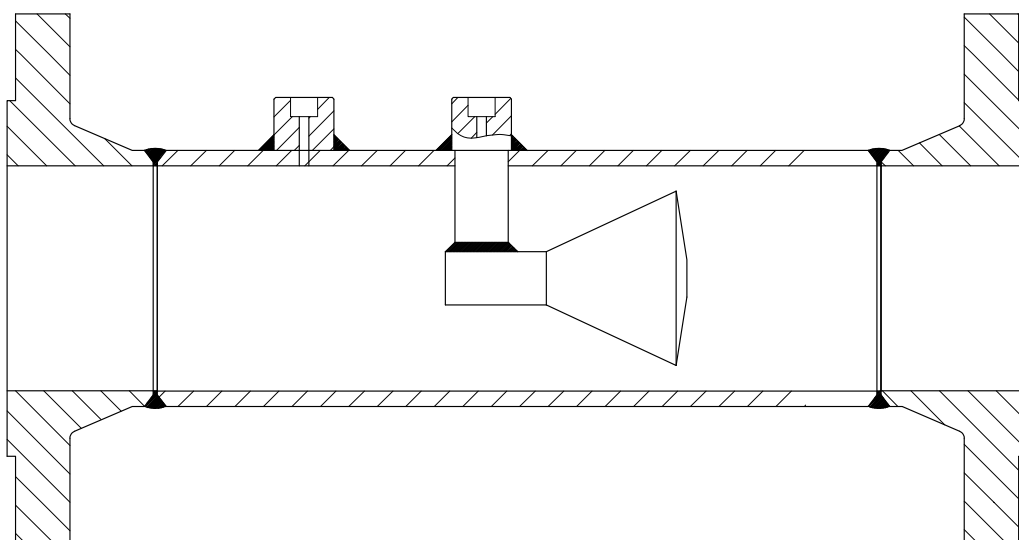
VENTURI CONE METERS

VCM Series

DESCRIPTION

The Venturi Cone Meters (FE) is the most advanced instrument among the differential pressure ones. The flow profile obtained allow limitation of fluid perturbations upstream and downstream measurement line, ensuring reliable measurement even with limited straight lengths.

For an optimal result, manufacturing ability and punctual monitoring of the process are mandatory.



FEATURES

- Complete production control fully integrated inside the company and highly competent local suppliers.
- Qualified welders and welding procedures compliant with ASME IX and EN ISO 15614.
- Completely customizable on client's needs thanks to the support of our technical and sales departments.
- Over 60 years company experience with instruments installed in the entire world.
- Long working life ensured by high quality materials.

PROS	CONS
Lower upstream and downstream straight lengths, compared to classical Venturi tube: <ul style="list-style-type: none"> • Upstream 3D for beta $0.45 \div 0.6$, 6D for beta > 0.6 • Downstream 2D 	The low availability of experimental data, doesn't assure high accuracy, if not calibrated
Suitable for a wide range of fluids, gases and vapours	
High flow rangeability	
Low maintenance cost	

APPLICATIONS

- Oil & Gas plants, Refineries
- Chemical and petrochemical plants
- WATER / GAS treatment and distribution
- Power generation

TYPICAL PERFORMANCES

- Range: 1 ÷ 10
- Max. Pressure and Temperature, allowed by used materials
- Accuracy: $\pm 5\%$ of F.S.. With calibration: $\pm 0.5\%$ of F.S.
- Repeatability: $\pm 0.1\%$

ACCESSORIES ON REQUEST

- Nipples and Valves, Fittings, Condensing pots
- Manifold and Differential Pressure Transmitter
- Calibration

TECHNICAL SPECIFICATIONS

USE	Liquids, Gases, Vapors	
DIMENSIONS	ND 2" ÷ 20" / DN 50 ÷ 500 or higher on request	
DESIGN	Flow Calculation and Construction	According to ISO-5167-5
	Pressure Taps Option	According to norm
	Option	We build devices according to Norm
ARRANGEMENTS	Flange ANSI B16.5 / ANSI B16.47 A - B / API 6B – 6BX	
	Flange EN-1092-1 / UNI 2223 / DIN	
RATING	ANSI/ASME - 150, 300, 600, 1500, 2500	
	EN-PN - 10, 16, 25, 40, 63, 100	
PROCESS CONNECTION	ANSI/ASME - RF, FF, RTJ with sealing surface AARH 125 ÷ 250, 63	
	EN-PN - Type 01, 11, 12 with sealing surface Type A, B1 and B2	
INSTRUMENT CONNECTION	Pressure taps: Flanged RF – RTJ, Threaded NPT-F - SW	
	Flanged: RF – RTJ	

MATERIALS

GENERAL	As per project specifications, however mainly according to ANSI/ASME/AISI code or according to EN/UNI/DIN codes. Certificates with requirements like NACE MR-0175 e MR-0103 /ISO 15156, Dual grade, and PED. Others to be evaluated on request.
EXTERNAL BODY	Generally, according to project specification. Mainly Carbon Steel, Low Carbon Steel, Alloy Steel, Stainless Steel, Duplex / Super Duplex, Nickel Alloy Steel.
PRIMARY ELEMENT	Stainless Steel, Duplex / Super Duplex, Nickel Alloy Steel or others on request



Officine Orobiche S.r.l.

Via Paglia, 22 - 24050 Zanica (Bergamo) - Italy
Tel. +39 035 4530 211



www.officineorobiche.it
info@officineorobiche.it