

TLQ-W SERIES FLOAT & BOARD LIQUID LEVEL INDICATOR

DESCRIPTION

The Officine Orobiche float & board level indicators provide a simple, reliable and low-cost measurement system for any type of storage vessels.

Thanks to this type of level indicators, you can check at a glance the liquid level, even from a long distance.

The installation kit is complete and ready to be used; the range includes a standard non-vapor sealed version (TLQ-38W) and a watertight version (TLQ-41W).

Both are available in a wide variety of materials including special alloys and thermoplastic materials.

On request, it is possible to supply a 20" "Manhole Flange" on which it is possible to obtain a rectangular hatch (generally with 400x152 mm size) to allow inspection of the inside of the tank.

PRINCIPLE OF OPERATION

Principle of operation is very simple: a float is connected through a cable to a sliding index that moves along a graduated scale fixed with brackets welded to the tank walls. When the tank is empty, the float is at its bottom and as a result, the index is in the highest part of the graduated scale. On the other hand, when the tank is full, the float reaches the upper part of the tank while the index points to the lowest position of the graduated scale. The few moving parts and the very low speed make this level indicator a reliable instrument that is no subject to failure. Moreover, the simplicity of the measuring system makes monitoring and maintenance possible even for non-specialists.



APPLICATIONS:

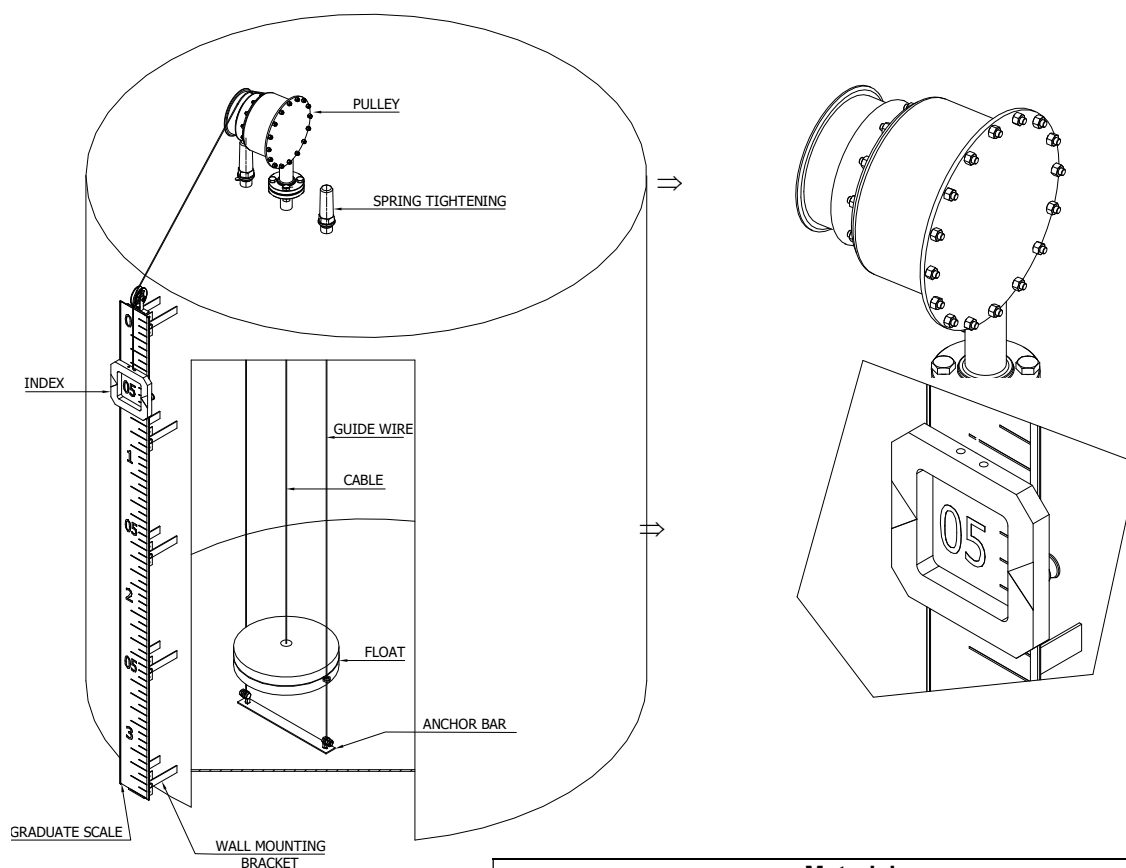
Edible Oil, Liquid Petroleum Products, Highly Viscous Oil & Varnishes, Corrosive Liquids, Water, Effluents and Chemicals. Acid & Alkaline Solutions, Food Stuffs, etc.



- Simple Mechanical Construction
- Easy readability from a distance
- High reliability, less maintenance

FLOAT & TAPE INDICATOR MOD. 41W VAPOR SEAL

Typical installation

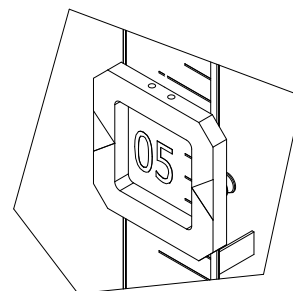
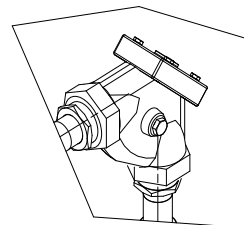
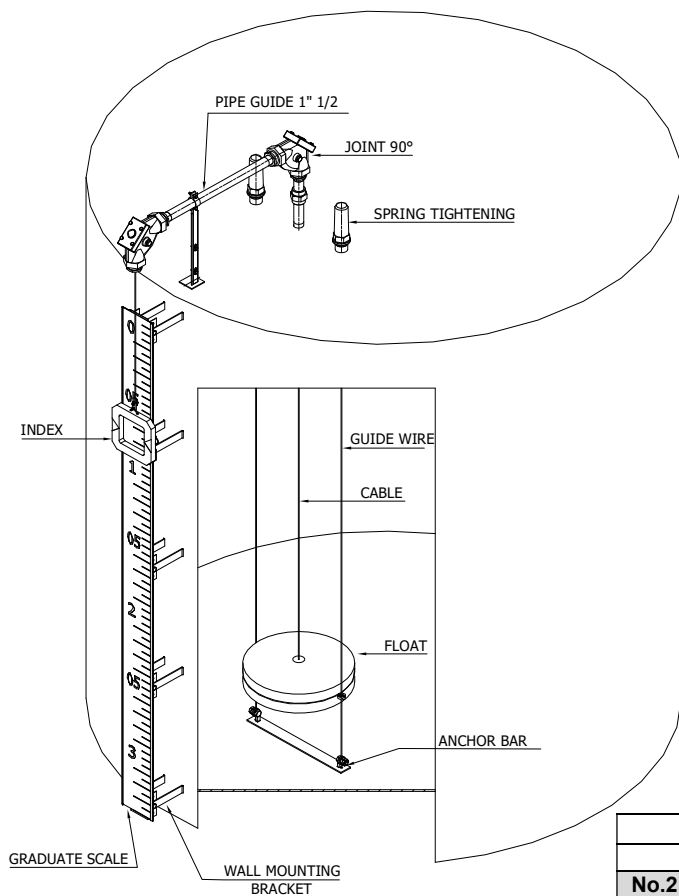


Material		
Items	Standard	Opzionali
No.1 Pulley	AISI 316L	/
Float	AISI 316L	F53/Monel/Alloy 625
Vapor seal head	AISI 316	/
No.2 Guide wire	AISI 316	F53/Monel/Alloy 625
No.1 Central cable	AISI 316	F55/Monel/Alloy 625
Anchor bar	AISI 316	F55/Monel/Alloy 625
No.2 Spring tightening	AISI 316	/
Graduated scale	Aluminium	AISI 316
Brackets	AISI 316	/

Technical data	
Design pressure	$\leq 0,49$ bar (higher pressures on request)
Design temperature	-20/+80 °C
Operating pressure	-35/+400 mbar
Measuring range	2....25 m
Connections	Flanged 1"½ ANSI 150 / threaded / others on request
Scale color	White or yellow with black numbers

FLOAT & TAPE MOD. TLQ-W38

Typical installation



Materials		
Items	Standard	Optional
No.2 90 ° elbows	AISI 316	Aluminium
Float	AISI 316L	F53/Monel/Alloy 625
No.2 Guide wire	AISI 316	F53/Monel/Alloy 625
No.1 Central cable	AISI 316	F55/Monel/Alloy 625
Anchor bar	AISI 316	F55/Monel/Alloy 625
No.2 Spring tightening	Carbon steel	AISI 316
Graduated scale	Aluminium	AISI 316
Brackets	Carbon steel	AISI 316

Technical data	
Design pressure	Atmospheric
Design temperature	-20/+80 °C
Operating pressure	Atmospheric
Measuring range	2....25 m
Connections	Flanged 1"½ ANSI 150 / threaded / others on request
Scale color	White or yellow with black numbers

HOW TO ORDER

Example: TLQ-41W

TLQ series

41W model

The following data is also required: type of liquid, specific gravity, operating / design temperature & pressure and measuring range.